



# SERVICE & LUBE TRUCK BODIES



CUSTOM DESIGN | QUALITY MANUFACTURING | SAFETY TECHNOLOGY | DIRECT SALES | FINANCING | NATIONWIDE SERVICE

## REACH FOR THE PEAK

[SUMMITBODIES.COM](http://SUMMITBODIES.COM)

# ABOUT US



Summit Truck Bodies manufactures high-quality, custom-designed service & lube bodies, drawer systems, cranes, and accessories for the field service industry. We use state-of-the-art design and manufacturing processes to build each body to customers' exact specifications, ensuring complete satisfaction.

**WHEN YOU CHOOSE SUMMIT YOU'VE REACHED THE PEAK.**





# THE SUMMIT ADVANTAGE

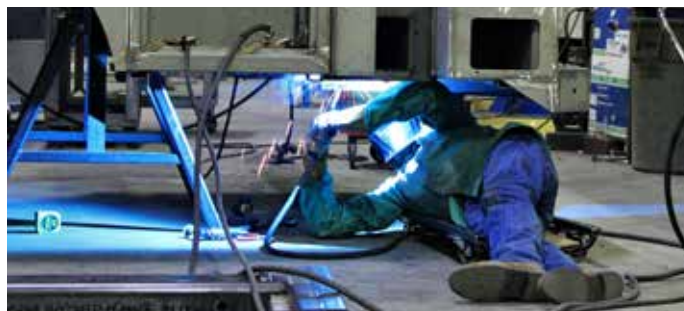


Purchasing a Summit means buying factory direct. Our highly trained salesmen located throughout North America help you design the perfect truck to meet your needs. The process begins by choosing from one of our many in-stock chassis, or if you prefer, you may provide your chassis. Our salesman will take you through our pre-build process, provide 3-D approval drawings, and dimensional sign-off drawings before orders go into production.

Are you looking for lease or loan options? Our in-house finance division offers a full range of lease and loan options to fit your business needs tailored to our industry's needs.

Understanding your truck body is a vital tool for your business, and your need to keep it operating is paramount. If a need arises, you can easily reach our factory-based customer support team; they are ready and waiting to assist you.

Our ability to custom design to meet your specs, commitment to quality manufacturing, continuous innovation of safety technology, and our knowledgeable sales team & customer support are what creates the **"Summit Advantage."**



CUSTOM DESIGN | QUALITY MANUFACTURING | SAFETY TECHNOLOGY

DIRECT SALES | FINANCING | NATIONWIDE SERVICE



# MANUFACTURING...

Summit Truck Bodies' 132,000 square foot production facility, centrally located in Wathena, Kansas, makes it convenient and cost-effective to ship anywhere in North America. Being vertically integrated helps us meet the demands for custom builds by manufacturing the highest quality products and providing the industry's best ongoing customer support. Each day the same craftsmen weld, paint, assemble and test every Summit body, ensuring quality work. We work to achieve the goal of consistent, long-lasting quality. We do it better than anyone else.



## DESIGN

We begin with our in-house design process using computer-aided 3D design software and FEA (finite element analysis) to ensure strength and reliability. Once customers approve the designs, they go to the production floor.



## FABRICATION

Next is the fabrication process; operators load pre-programmed computer-aided fiber laser cutting machines with raw steel and aluminum. Next, we form and bend using press brakes for manufacturing proficiency.



## WELDING

Next is the fabrication process; operators load pre-programmed computer-aided fiber laser cutting machines with raw steel and aluminum. Next, we form and bend using press brakes for manufacturing proficiency.



# ...AT THE HIGHEST LEVEL

## WE DO IT BETTER THAN ANYONE ELSE.



### PAINT & CHASSIS PREP

Painters take everybody through a three-step PPG Delfleet paint process. The protective coating is also applied. Meanwhile, our chassis prep team equips the cab and chassis as needed before the body is mounted.



### FINAL ASSEMBLY

Our specialized service & lube body technicians now mount the body to the chassis, installing electrical and hydraulic components, cranes, and other accessories. QA inspectors assure the quality you expect and deserve in every Summit body.



### FINAL DETAIL & GRAPHICS

Before leaving the factory, our detailers thoroughly clean each truck top to bottom and install safety decals. At this time, Yellow Frog Graphics will install custom-designed fleet graphics.



# STANDARD FEATURES

## HYDRAULICS

- ▶ Open center fixed displacement gear pump
- ▶ Direct mounted to transmission PTO
- ▶ 26 or 32 gal. body mounted hydraulic reservoir

## AIR COMPRESSOR SYSTEM

- ▶ Hydraulic driven reciprocating or rotary screw air compressor
- ▶ 40 CFM free air output at 100 psi
- ▶ 175 psi max output
- ▶ Hannay ½" x 50' HD spring rewind hose reel equipped with 50' of 250 psi rated air hose, terminated with ½" male NPT hose end
- ▶ ASME underbody air receiver
  - > 15 or 19 gal. reserve tank
  - > Mechanical air tank moisture drain
- ▶ Norgren ½" Filter/Lubricator/Regulator installed in compartment with air reel

## TOOL BOXES

- ▶ Summit designed and manufactured drawer packs.
- ▶ .125" aluminum construction
- ▶ Heavy-duty 600 lbs. slides fully extended.
- ▶ Lock-in & lock-out slides.
- ▶ Removable drawers.
- ▶ Lock-in drawer dividers standard with optional egg crating.
- ▶ Lockable single-action handle assembly.
- ▶ Drawer depths of 3", 5", 7"
- ▶ Custom widths from 12"-50".
- ▶ Optional egg crating
- ▶ Optional slide-out work tray
- ▶ Adjustable integrated top shelf or reduces top plate
- ▶ Limited Lifetime Warranty

## LIGHT/ELECTRICAL PACKAGE

- ▶ LED marker lights front and rear
- ▶ LED stop/tail/turn & reverse lights flush-mounted in the rear bumper face
- ▶ Backup alarm mounted under the bumper
- ▶ LED compartment lights installed in each compartment
- ▶ LED work lights: Qty 4
- ▶ Control lights from control panels in the rear compartment and cab.
- ▶ Weatherproof latching main body power panel installed in crane compartment.
- ▶ Includes push-button panel to control crane, outriggers, and 12V body accessories, including lights
- ▶ 7-pin RV style trailer plugin installed in the bumper

## MORE THAN JUST WHAT YOU NEED.





## BODY

- ▶ Galvannealed steel body construction; varies by model.
- ▶ 1/8" aluminum bolt-on internal framed doors
  - > Full-length piano style aluminum hinges
  - > Automotive-style bulb seal weather stripping around all compartment doors
- ▶ Three-point compression style compartment latches
- ▶ Aluminum drip rail installed above compartment doors
- ▶ Cargo area floor built with 3/16" tread plate.
- ▶ Fully integrated crane structure
- ▶ 6000 lb flush mount swivel D-rings installed in the cargo area (Three per side)
- ▶ 24" deep storage compartment rear bumper
- ▶ Grip strut step integrated into the rear bumper.
- ▶ Standard automotive-style receiver hitch
  - > 2.5" 18,000 lb. on 8 and 10 Series bodies
  - > 2" 10,000 lb. on 7 Series bodies
- ▶ Infinitely adjustable compartment shelves with dividers
- ▶ Knurled grab handles on the rear of the body
- ▶ 12" aluminum slam style lockable tailgate
- ▶ Torch bottle compartment
- ▶ Reinforced flush body mounting blocks
- ▶ Safety placard and decals

## PAINT

- ▶ Three-step paint process - phosphate wash, PPG epoxy primer, and PPG Delfleet top coat
- ▶ Single-stage finish coat on all external areas of the body and accessories carry a
- ▶ Five year PPG warranty against rust and corrosion
- ▶ Endless color options
- ▶ Line-X protective coating applied to the cargo area, bumper, side pack front, top, rear, and the entire length of the bottom edge.
- ▶ Rubberized undercoating applied to the entire underside of the body optimizes longevity.





# ADVANCED SAFETY ELECTRONICS

## A.S.E PHASE 4

- ▶ Operate and monitor the crane, outriggers, engine, PTO, AC, hydraulics, and lights
- ▶ Prevents crane functionality under unsafe operating conditions
- ▶ Displays LMI (Load Moment Indicator) in real-time, taking the guesswork out of lifting capacity in any given position.
- ▶ Display alerts in plain text, e.g., oil temp, outriggers not deployed, crane overload, etc.
- ▶ Self-diagnostic checks upon start-up and during operation
- ▶ Systems controls; made in America, military-grade switches, solid-state componentry and IP66 water & dustproof
- ▶ J1939 based communication
- ▶ Incorporate telematics data into your fleet management solution
- ▶ Standard on all hydraulic crane service trucks



## MAIN CONTROL PANEL (REAR COMPARTMENT)

- ▶ Easy to use and read push-button display panel
- ▶ Digital graphic display of LMI data
- ▶ Start/stop the truck engine
- ▶ Engage PTO
- ▶ Engage compressor
- ▶ Auto deploy outriggers and level truck
- ▶ Auto stow crane
- ▶ PTO hour meter display
- ▶ Decreases crane speed when heavy loads are detected
- ▶ Lighting Control: Turn on/off all lights or individual body lights
- ▶ Novice mode setting for training feature
- ▶ Five auxiliary functions are available
- ▶ Perimeter fence functionality
- ▶ Access to time and date stamped alerts and overload events.







As innovators of crane safety technology Summit is now on Phase 4 of our industry-leading Advanced Safety Electronics (A.S.E) integrated control system. We've combined our crane and body operation controls with functional safety requirements using a network of switches and sensors to communicate real-time data. This easily accessible data enables operators to make safe informed decisions on crane movement and load placement. The telematics data that A.S.E gathers can be incorporated into your fleet management solution to help improve efficiency and productivity.

## MINI CONTROL PANEL (CAB)

- ▶ PTO control
- ▶ Lighting control
- ▶ Programmable auxiliary switches eliminate the need for chassis up-fitter switches.
- ▶ Control system alerts indicated by flashing lights and beeping
- ▶ Wireless remote missing alert
- ▶ Boom not stowed
- ▶ Outriggers not stowed

## WIRELESS REMOTE CONTROL

- ▶ Digital display monitor communicates diagnostics, LMI (Load Moment Indicator) data, and alerts in real-time.
- ▶ Fully proportional joysticks with built-in detents to assist in guiding crane controls
- ▶ The time-out feature deactivates controls when not in use for a selected amount of time.
- ▶ Start/stop the truck engine
- ▶ Auto deploy outriggers and level truck
- ▶ Start/stop air compressor & increase idle switch.
- ▶ The safety drop accelerometer deactivates crane controls when a fall is detected.
- ▶ The battery life indicator displayed
- ▶ Auxiliary switch
- ▶ Access to additional settings options
- ▶ Small, lightweight design
- ▶ Three handling options: Pistol grip/Belt clip/Shoulder harness
- ▶ Four AA alkaline battery powered
- ▶ Robust magnet



# 7-SERIES



Are you looking for a versatile and rugged medium-duty service truck? If so, you need our 7 Series truck body designed for up to 22,500 GVWR chassis. This 11' truck body can handle a 7,500 lbs capacity crane and other equipment to perform various jobs in the field. You'll have 150 cu-ft of storage space for your tools and parts. Therefore, the 7 Series is an excellent choice for service truck fleets that need flexibility, ease of use, and safety.

## CONSTRUCTION

Body Weight	3,295 lbs.
Width	94"
Length	11'
Body Rating	38,000 ft.-lbs.
Materials	12 Ga.

## CARGO DECK

Width	50"
Depth	132"

## SIDE PACK

Height	40"/50"/62"
Depth	22"

## OTHER DIMENSIONS

Workbench Depth	24"
Tailgate Height	12"
Storage Capacity	150 cu.ft.







Our 8 Series service truck body, intended for a 26,000 GVWR chassis, is 11' and supports up to 12,000 lbs. capacity crane. It's built for strength and durability and will perform in rough conditions for years to come. The body has abundant storage for tools and accessories to ensure field service techs arrive at the job site prepared to complete any task. It will be the most utilized piece of equipment in your fleet.

## CONSTRUCTION

Body Weight	5,250 lbs.
Width	98"
Length	11'
Body Rating	60,000 ft.-lbs.
Materials	10 Ga.

## CARGO DECK

Width	54"
Depth	132"

## SIDE PACK

Height	40"/50"/62"
Depth	22"

## OTHER DIMENSIONS

Workbench Depth	24"
Tailgate Height	12"
Storage Capacity	165 cu.ft.



# 10-SERIES



Our 10 Series heavy-duty truck body can handle the big jobs your company encounters. The 14' service body mounted on 33,000 GVWR chassis accommodates up to 14,000 lbs capacity crane. It is often custom-designed to be a service-lube combo so your service tech can effectively and efficiently maintain and repair heavy equipment on the job site.

## CONSTRUCTION

Body Weight	5,500 lbs.
Width	98"
Length	14'
Body Rating	70,000 ft.-lbs.
Materials	10 Ga.

## CARGO DECK

Width	54"
Depth	170"

## SIDE PACK

Height	40"/50"/62"
Depth	22"

## OTHER DIMENSIONS

Workbench Depth	24"
Tailgate Height	12"
Storage Capacity	222 cu.ft.





# 20-SERIES



Our largest mechanics body, the 20 Series, is the mobile mechanic's dream. Although we have never built two the same, we will fully equip your truck as needed to face your biggest jobs. Commonly mounted on a 66K GVWR tandem axle and up to a 14K crane, you can go to the most remote job sites and carry what you need to finish any job in arduous conditions safely.

## **CONSTRUCTION**

Body Weight	9,000 lbs.
Width	98"
Length	18.5'
Body Rating	70,000 ft.-lbs.
Materials	10 Ga.

## **CARGO DECK**

Width	54"
Depth	222"

## **SIDE PACK**

Height	40"/50"/62"
Depth	22"

## **OTHER DIMENSIONS**

Workbench Depth	24"
Tailgate Height	12"
Storage Capacity	300 cu.ft.



# 4 -SERIES



Summit's lighter-duty service truck body, the 4 Series, is 9' long with a 6" bumper designed for an 11.5K GVWR chassis. If you want Summit quality manufacturing and don't need a larger medium-heavy duty service truck, then this is the service truck for you.

## CONSTRUCTION

Min. Chassis GVWR:	11.5K
Body Weight	1888lbs.
Width	80"
Length	9'
Body Rating use	not rated for crane use
Materials	10 Ga.

## CARGO DECK

Width	40"
Depth	170"

## SIDE PACK

Height	50"
Depth	20" top/14" bottom

## OTHER DIMENSIONS

Tailgate Height: 10" locking latch  
Bumper Depth: 6" bolt-on bumper





# CUSTOM BODIES



Summit can engineer, design and manufacture custom service & lube bodies, fuel & lube bodies, lube trailers, and lube skids meet your specific needs. Here are just a few of the custom-designed bodies we have manufactured for our customers.





# CUSTOM BODIES

## WELD/LINE BORE TRUCK

CONSTRUCTION		SIDE PACK	
Body weight	6,600 lbs.	Height	62"
Width	98"	Depth	22"
Length	176"	OTHER DIMENSIONS	
Body Rating	70,000 ft.-lbs.	Workbench Depth	30"
Materials	10 Ga.	Tailgate Height	12"
CARGO DECK		Storage Capacity	238 cu. Ft
Width	54"	Welder Deck	42"
Depth	134"		

## MAN BUCKET TRUCK

CONSTRUCTION		SIDE PACK	
Body weight	6,700 lbs. (includes crane & man bucket attachments)	Height	40"- 62"
Width	94"	Depth	22"
Length	156"	OTHER DIMENSIONS	
Body Rating	38,000 ft.-lbs.	Workbench Depth	30"
Materials	12 Ga.	Tailgate Height	12"
CARGO DECK		Storage Capacity	159 cu. ft.
Width	50"		
Depth	56"		





# CUSTOM BODIES

## GUNNISON EDITION

Designed for a 4x4 chassis and lifted, the Gunnison is ready to get you to the job in the roughest terrain.

### CONSTRUCTION

Body weight	3,875 lbs.
Width	94"
Length	132"
Body Rating	38,000 ft.-lb.
Materials	12 Ga steel

### CARGO DECK

Width	50"
Depth	132"

### SIDE PACK

Comp. Depth	62"
Comp. Height	22"

### OTHER DIMENSIONS

Bumper Depth	Up to 24"
Tailgate Height	12"
Storage Capacity	208 cu. ft.



## CANOPY BODY

Summit's canopy body is great for keeping technicians, tools, and equipment out of the elements.

### CONSTRUCTION

Body weight	4,020 lbs.
Body Length	132"
Body Height	112"
Body Rating	38,000 ft.-lbs.
Materials	12 Ga

### SIDE PACK

Comp. Depth	22"
Comp. Height	50"

### OTHER DIMENSIONS

Rear Door Width	42.5"
Rear Door Height	50.75"
Interior Clear Height	62"
Workbench Depth	18"



# OPEN & ENCLOSED LUBE BODIES

You can maximize equipment uptime by performing routine services in the field with a Summit Lube truck body. We understand preventative maintenance is crucial to ensuring your equipment is working and saves time and money on repair costs. You can choose an open or enclosed lube-style body to mount on the medium to heavy-duty chassis of your choice and have all the lube systems you need.

## ELECTRICAL & LIGHT PACKAGE

- ▶ LED lights for stop, turn, tail, and marker lights
- ▶ Strobe light
- ▶ LED work lights
- ▶ LED compartment lights.
- ▶ Single switch operation
- ▶ The main control panel or in-cab switches

## CHASSIS HYDRAULIC SYSTEM

- ▶ A heavy-duty power take-off mounted variable displacement hydraulic pump with a load sensing control allows flow regulation to suit application requirements.
- ▶ Hydraulic reservoir:
  - > Designed for flooded suction operation.
  - > 2.5" 150-micron mesh strainer with gate valve shut off
  - > 6-micron return filter with filter change valves
  - > We fill with ISO 46 hydraulic oil, cold climate, low viscosity oil available.





# SUPERIOR BUILD QUALITY

## WASTE OIL/ANTIFREEZE SYSTEM

- ▶ Stainless steel or poly tanks
- ▶ Air-operated double diaphragm pumps with directional valves
- ▶ Single line load and offload of used product
- ▶ 1" AODD for used oil.
- ▶ ½" AODD for used antifreeze
- ▶ Larger sizes are available for higher flow requirements.
- ▶ Electronic level indicator with shutoff prevents overflow of the waste system.
- ▶

## CHASSIS GREASE SYSTEM

- > 120# and 400# grease systems
- > Air-driven or hydraulically-driven
- > Hannay grease reel and nozzle

## WATER/ANTIFREEZE PRODUCT DELIVERY SYSTEM

- ▶ Stainless steel tanks or poly tanks
- ▶ Delivery Circuit Options.
  - > Hydraulic-driven centrifugal
  - > Air-operated double diaphragm pump.
- ▶ Tank-mounted Rochester level gauges with remote readout
- ▶ Non-metered delivery nozzle
- ▶ Optional digital metered nozzle



## **OIL PRODUCT DELIVERY SYSTEM**

- ▶ Steel or poly product tanks
- ▶ Delivery circuit options:
  - Flow rates from 2.5 up to 20 gpm
  - Hydraulic-driven 1:1 gear pump
  - Air-operated piston pump with flow rates
- ▶ Tank-mounted Rochester level gauges with remote readout
- ▶ Digitally metered nozzle sized to match circuit delivery rates
- ▶

## **ADDITIONAL FEATURES & OPTIONS**

- ▶ DEF systems available in customer required volumes
- ▶ Hydraulic driven generator/welders available
- ▶ Used Oil filter storage box
- ▶ Two grab handles on each side of the fold-down access ladder
- ▶ Two each 10 lb. ABC fire extinguishers-one per side of the truck
  - Accessible from ground level





## DEF DELIVERY SYSTEM

- ▶ Stainless steel tank
- ▶ Air-operated DEF diaphragm pump
- ▶ Hannay ½" x 50' SWR Reel with ½" hose
- ▶ Metered nozzle

## TANK OPTIONS

- ▶ Carbon Steel: 50,60,90,120,150,250 gal tanks
- ▶ Poly Tanks: 40,60,90,150,150,200,300 gal tanks
- ▶ Stainless Steel: 50,60,90,120,150,250 gal tanks

## ADDITIONAL OPTIONS

- ▶ All-in-one units
- ▶ Welders
- ▶ Air compressors
- ▶ Pressure washer
- ▶ Generator
- ▶ Heating options
- ▶ Power inverters
- ▶ Used oil filter storage box
- ▶ Drain pan storage
- ▶ Oil filter crusher
- ▶ Grab handles
- ▶ 10 lb. ABC fire extinguishers
- ▶ Non-potable water tank
- ▶ Custom bumpers
- ▶ Lighting



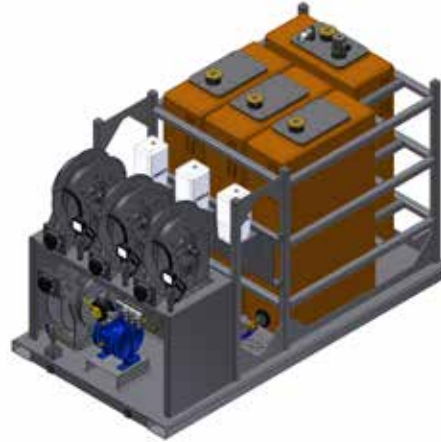
# LUBE SKIDS

Summit Lube Skids & Trailers are a flexible and affordable way to provide routine maintenance services. They are a cost-effective solution to decreasing equipment downtime and increasing your bottom line. You can store it at the shop and easily haul your trailer or load the skid into your service truck cargo area when you need it. And, we will custom-design a lube skid or trailer to complete your project and budgetary requirements.

**QUAD 60 STEEL**



**QUAD 60 POLY**



**50-50-100 STEEL**



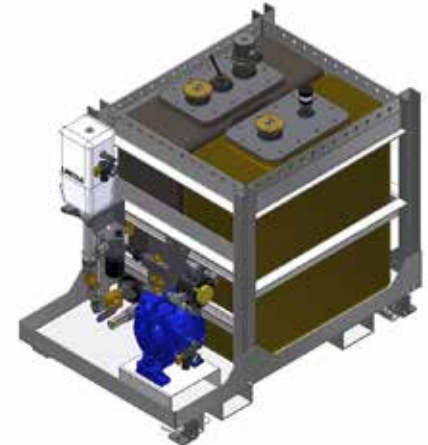
**35-35 STEEL**



**25-25-50-100 STEEL**



**40-40 POLY**







**ELEVATE  
JOB-SITE  
PERFORMANCE.**



# LUBE TRAILERS

Built with the same quality and attention to detail as our service and lube truck bodies, our custom enclosed lube trailers are a great solution to meet your preventative maintenance needs. Built to fit your application these trailers can easily be hauled to the job site.

## 18' ENCLOSED LOGAN COACH TRAILER

- ▶ 8' 6" wide with 7' interior height
- ▶ Triple 7000lb axles
- ▶ Electric brakes on all three axles
- ▶ Insulated walls and ceiling
- ▶ 10 ga tread plate steel floor

## ADDITIONAL OPTIONS

- ▶ New Filter storage
- ▶ Used Filter Storage
- ▶ Tool Drawer Package
- ▶ Welder
- ▶ Air Compressor & air reels
- ▶ Spare Tire
- ▶ Shelving
- ▶ Interior & exterior lighting
- ▶ Battery Power
- ▶ Interior Heat

## LUBE SYSTEM OPTIONS

- ▶ New oil delivery systems
- ▶ Waste oil transfer system
- ▶ New antifreeze system
- ▶ Waste antifreeze system
- ▶ Chassis grease system
- ▶ Diesel Fuel
- ▶ DEF
- ▶ Poly or Steel Tanks
- ▶ Air Driven Pump Systems
- ▶ Hannay or Graco Reels
- ▶ Lincoln Metered Nozzles

## AIR COMPRESSORS



**VANAIR RELIANT™ RC40-L**  
Reciprocating air compressor, 30-40 CFM



**VANAIR RELIANT™ RS-85**  
Rotary screw air compressor, 60-85 CFM



**VMAC**  
Rotary screw air compressor, 25-60 CFM



**DTM 70 CFM**  
PTO driven, direct transmission mounted, air compressor

## ALL-IN-ONE UNITS



**MILLER® ENPAK® A60**  
Generator, air compressor, hydraulic pump,  
EnVerter™ technology

Available in gas or diesel models



**MILLER® ENPAK® A30**  
Welder, generator, air compressor,  
battery charger/crank assist, remote panels

Available in gas or diesel models



**BOBCAT™ 200 AIR PAK™**  
Welder, generator, air compressor,  
battery charge/crank assist

Available in gas or diesel models



**AIR N ARC® I-300**  
Welder, generator, air compressor, battery  
booster, charger and hydraulic pump

Available in gas or diesel models



**VMAC RAPTAIR-MF**  
Welder, generator, air compressor, battery  
booster, charger and hydraulic pump

## WELDERS



**MILLER® BOBCAT™ 225 OR 250**  
Welder/generator w/optional EFI and GFCI



**MILLER TRAILBLAZER® 325**  
Welder/generator w/optional Excel™ power, EFI, GFCI  
and battery charger



**LINCOLN RANGER® 225**  
Engine Driven Welder/Generator with Electric Fuel Pump



**LINCOLN RANGER® 305**  
Welder/AC generator w/optional EFI and electric fuel pump



# CUSTOM UPFITS FOR YOUR APPLICATION







**WHELEN JUSTICE LIGHTBAR**



**RIGID SCENE LIGHT**



**AMBER STROBE**



**SWIVEL WORK LIGHTS**



**SUPERIOR SIGNALS**



**WIG WAG LIGHT SYSTEM**



**FUEL DELIVERY SYSTEM**



**LUBE SKID 4040**



**OUTRIGGER PADS**



**RIDIG CHAIN VISE**



**GANG LOCKS**



**MAN BUCKET AND STORAGE PLATFORM**





**E-TRACK**



**PRESSURIZED COMPARTMENTS**



**HEATED COMPARTMENTS**



**SIDEPACK STEP**



**POWER INVERTER & OUTLET SHELF**



**TRASH CAN / WATER COOLER HOLDER**



**CARGO COVER - SLIDE TOP**



**CARGO COVER - ROLL TOP**



**SPARE TIRE MOUNT**



**LADDER RACK - FRONT OF BED**



**SIDE PACK LADDER RACK**



**AERO SPRAY CAN SHELF**





**CUSTOM BUMPER**



**JAIL STYLE HEADACHE RACK**



**WELDER CUTOUT COMPARTMENT**



**RIGGING BASKET**



**SIDE-STEP BUMPER**



**SIDE-STEP BUMPER**



**TOOL STORAGE**

**MORE AVAILABLE OPTIONS:**

KEYLESS ENTRY  
JUMP START SYSTEM  
COMPARTMENT DOOR STRIP LIGHTS  
ADDITIONAL SCENE LIGHTING



**WHEEL CHOCK - OVER WHEEL**



**WHEEL CHOCK - UNDER BODY**



**TOW HITCH STEP**



**WINCH**



# SUMMIT DRAWER SYSTEMS

We have raised the standard in service truck tool storage. Our drawer packs and bolt bins can be custom designed to fit your truck body, and you choose the width, depth, and drawer configuration that will best suit your tool storage needs. Built stronger to last longer; it's the Summit Drawer Systems promise. We stand behind our product value, quality, and reliability. The Summit Drawer Systems limited warranty covers the materials and workmanship.

## **DRAWER PACKS**

- ▶ Lightweight .125 aluminum construction
- ▶ Single action extruded aluminum handle assembly for ease of use
- ▶ Lockable drawers with replaceable key cylinders
- ▶ Fully extendable heavy-duty 600 lbs ball bearing slides
- ▶ Lock-in & lock-out drawer slides
- ▶ Drawer combinations in 3", 5", 7" depths
- ▶ Custom widths from 12" - 50" in 2" increments
- ▶ Custom depths from 12" to 24" in 2" increments
- ▶ Overall drawer depth = drawer depth + 1" for the latch assembly
- ▶ Custom riser heights start from .5".

## **BOLT BINS**

- ▶ Lightweight .125 aluminum construction.
- ▶ Pull style handles
- ▶ Removable drawers
- ▶ Removable door enclosure with a carabiner
- ▶ Aluminum drawer dividers
- ▶ Overall Parts Bin Depth: 18.25"
- ▶ Drawer Size: 6" width by 3" Height
- ▶ Standard Riser: 3.25"



**WE STAND BEHIND OUR PRODUCT VALUE, QUALITY AND RELIABILITY. OUR LIMITED WARRANTY COVERS THE MATERIALS AND WORKMANSHIP OF OUR PRODUCTS.**

# SERVICE CRANES

We've engineered and designed our truck-mounted service cranes to meet today's heavy equipment service demands. Summit cranes are proven dependable, whether deep in a mine or out on a construction site. Providing the lifting capacity, power, and versatility needed for your application, we offer heavy-duty hydraulic and light-duty electric telescopic service cranes that feature lifting capacities from 4,000 lbs -14,000 lbs. and a horizontal reach of 21' or 29'. Through strength, reliability, and safety, Summit Cranes get the job done.

## HYDRAULIC CRANES

- ▶ Boom mounted winch
- ▶ 400° Rotation
- ▶ Overload Protection
- ▶ Auto release hook
- ▶ Auto stow crane
- ▶ PPG powder coated boom
- ▶ ANSI B30.5 and OSHA 1910.180
- ▶ ASE Phase 4 Control System with wireless remote standard
- ▶ Phase 1 crane controls on ship-out cranes
- ▶ Man-bucket Option
  - ▶ Bucket Load Capacity (single-person): 300 lbs
  - ▶ Fiberglass Bucket Weight: 88lbs
  - ▶ Crane Attachment Weight: 55 lbs
  - ▶ Bucket Attachments Weight: 79 lbs



## ELECTRIC CRANES

- ▶ Boom mounted winch
- ▶ 360° Continuous Rotation
- ▶ Overload Protection
- ▶ Auto release hook
- ▶ PPG powder coated boom
- ▶ ANSI B30.5 and OSHA 1910.180
- ▶ Wireless control system standard



## MAN BUCKET SPECIFICATIONS

Basket Load Capacity (Single Person)	300 lbs.
Fiberglass Basket Weight	88 lbs.
Crane Attachment Weight	55 lbs.
Basket Attachment Weight	79 lbs.



# SERVICE CRANES

Summit's truck mounted service cranes are designed to meet the demands of today's heavy equipment service industry. Whether deep in a mine or out on a construction site, our heavy duty cranes have a proven track record for dependability. Through strength, reliability and safety, Summit Cranes get the job done.

Model	4416E	6422E	6620	6629	7529	10620	10629	12629	14629
Max Lift Capacity (lbs.)	4,000	6,000	6,000	6,000	7,500 lbs	10,000	10,000	12,000	14,000
Crane Rating (ft.-lbs.)	16,000	36,000	38,000	38,000	45,000	60,000	60,000	66,000	70,000
Standard Boom Length (retracted)	7'	10' 6"	10' 7"	12' 9"	14' 5"	10' 9"	13' 7"	13' 5"	13'
Max Horizontal Reach (extended)	16'	22'	20' 8"	28' 7"	29'	20' 8"	28' 11"	28' 9"	29'
Boom Elevation	-5° to 75°								
Crane Rotation	360° Continuous		400°						
Max Winch Line Speed	22 ft/min	30 ft/min	60 ft/min						
Rope Diameter	1/4"	5/16"	3/8"	3/8"	7/16"	7/16"	7/16"	7/16"	1/2"
Stowed Height (approx.)	34 9/16"	37 7/8"	40 5/8"	40 5/8"	43"	41 1/4"	41 1/4"	42 3/8"	52 1/4"
Weight	825 lbs.	1,817 lbs.	1,720 lbs.	1,900 lbs.	2100 lbs.	2,350 lbs.	2,620 lbs.	2,640 lbs	3,440 lbs.
Mounting Space Req'd	14 " x 14"	18" x 18"	21" x 25"	21" x 25"	21" x 25"	21" x 25"	21" x 25"	21" x 25"	25" x 34.5"
Power Supply Req'd	12VDC		PTO & Pump (8gpm @2600psi) All-in-One Power Unit						
Controls	Wireless Radio Remote Standard								

In order to provide the lifting capacity, power and versatility needed for your application Summit offers heavy duty electric and hydraulic telescopic service cranes that feature lifting capacities from 4,000 lbs. to 14,000 lbs. and a horizontal reach of 21 ft. or 29 ft.

All Summit cranes are designed using state of the art Finite Element Analysis (FEA) and are strain gage tested to ensure structural integrity. Each crane model is tested by an outside independent organization to ensure it meets ANSI B30.5 and OSHA 1910.180 Summit crane boom sections are robotically welded and manufactured out of low-alloy high strength steel. Each section is also PPG powder coated for long life and durable protection against harsh working and weather environments.

To safeguard operation every cylinder includes load cushioning counterbalance valve for precise load handling. Check valves on lift cylinders prevents load drop if the hydraulic hose fails. An automatic overload protection system is built into every crane to deter the dangers associated with handling excessive loads. Summit's Advanced Safety Electronics (A.S.E.) integrated crane control system is standard on all hydraulic cranes mounted to trucks in the factory.

# CUSTOM GRAPHICS



Taking Your Brand  
a Leap Forward.

## PRODUCTS OFFERED

- GRAPHIC DESIGN •
- FLEET GRAPHICS •
- CUSTOM VEHICLE WRAPS •
- PAINT PROTECTION FILM •
- WINDOW TINTING •
- APPAREL •
- CUSTOM SIGNAGE •
- PROMO ITEMS •
- ENVIRONMENTAL GRAPHICS •

# WE SPECIALIZE IN FLEET WRAPS



@YELLOWFROGGGRAPHICS



3M MCS Warranted Company



3M Preferred Installation Company

P: 816.233.3374 E: INFO@YELLOWFROGGGRAPHICS.COM



# CUSTOMER SUPPORT & SUMMIT FINANCE

At Summit, we know how important it is to keep your service or lube body working hard for you. That is why offer a customer support team that is willing to go over and above to make sure you have the technical assistance and parts you need.

We also work with a nationwide network of trusted service providers who will perform service and warranty work in the field.

For any service issues or technical assistance call our Service Department directly at **866-985-3100** Monday through Friday from 7 a.m. - 5 p.m. CST.

For emergency after hours assistance please call **816-262-9896**.

Our Parts Sales Department can help you with parts and preventative maintenance kits. Along with new drawer packs, service cranes, air compressors and other service truck accessories to make sure you are well equipped to get the job done. Parts Sales may be reached directly at **303-260-6770** Monday through Friday from 7 a.m. - 4:30 p.m. CST.

You can reach the Parts Sales Department and our Service Department by email at **partsandservice@summitbodies.com**



Summit provides a full range of competitive lease and finance programs that are tailored to the field service industry. These include:

- ▶ TRAC Lease
- ▶ FMV Lease
- ▶ Equipment Lease
- ▶ Installment Lease
- ▶ Loan & Security Agreement

Whether it's offering off-balance sheet leasing to free up capital or a purchase loan, our finance representatives will work with you to provide the right solution for your business. We are committed to building lasting relationships with our customers through personal and flexible service.

# WHAT CUSTOMERS SAY

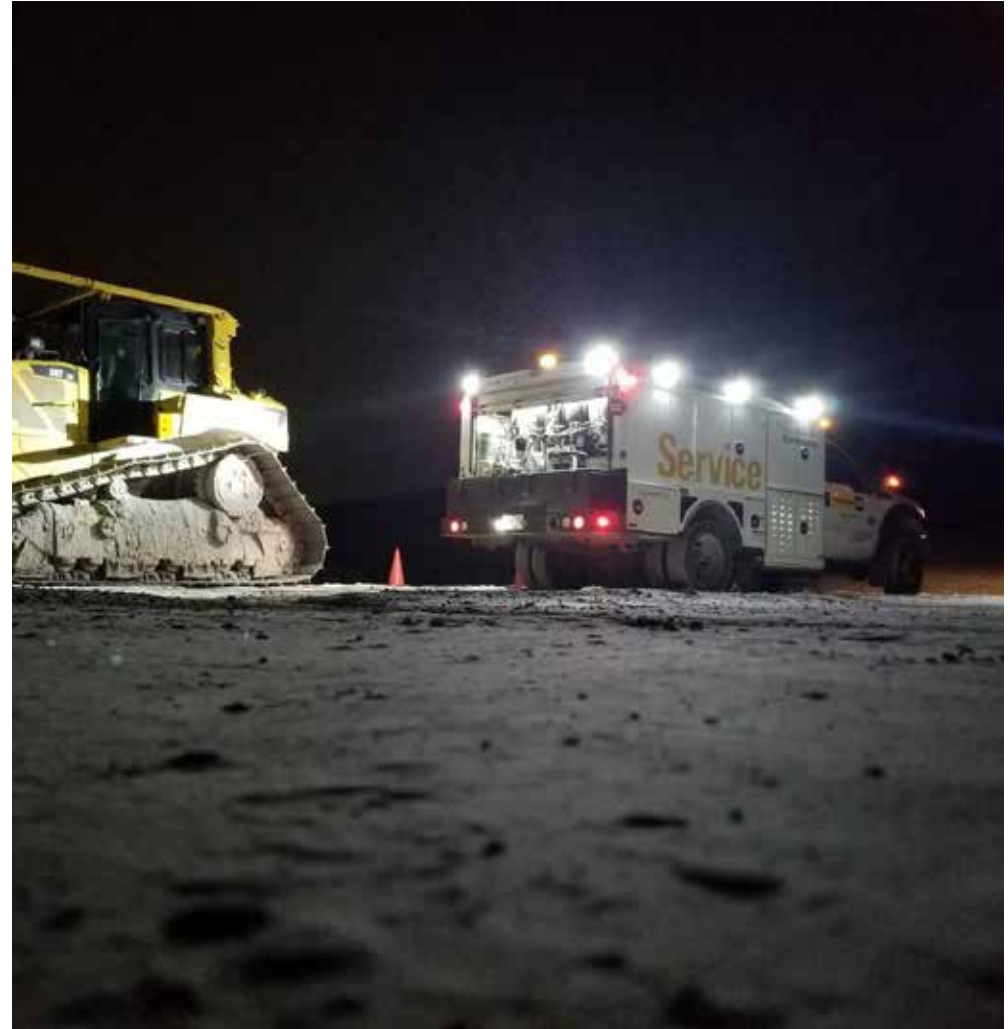


"Our first Summit Service Body was purchased in 2005 and is in service today, a testimony to well-built equipment. We have tried another brand and came back to Summit and currently have a KW with 8-series body on order. The bodies are durable with no signs of fatigue which allows re-chassis. Extended life = lower life-cycle costs.

We call our Summit units "Mobile Shops" because we can accomplish most repairs in the field. The remote-controlled crane, powered outriggers, central locking system, air compressor, and generator/welder allows our technician a wide range of capability while providing maximum value for our customer.

Our Summit Sales Rep. Eddie Gilmore is a ready resource for us if questions or needs arise relating to the equipment. We are pleased to recommend Summit Truck Bodies!"

**TOM ARMSTRONG**  
PRESIDENT,  
ANDRESS ENGINEERING



"Ring Power has been a user of Summit Lube and Service Bodies for over 8 years. From the design stage, fabrication process, manufacturing and on-time delivery we have been very pleased with the quality of products and high levels of service provided by Summit Truck Equipment."

**WAYNE VEITCH**  
VICE PRESIDENT,  
RING POWER CORP



# WHAT CUSTOMERS SAY



"There is no obstacle that would have prevented us from buying your truck. We wanted the best. As a result of dealing with your team, we have a new outlook on what level of detail goes into a truck of this caliber.

Everything we asked for was looked at with a "yes we can attitude" and your team definitely came through 100%. Great service is just a phone call away!

This truck makes working 13 miles off blacktop down the woods roads just like bringing the machines to the shop. The abilities of the body and truck amaze me every day! I would recommend Summit every day until they put me in the ground!"

**RAY CAMPANY**  
FIELD MECHANIC,  
RICHARDS FOREST PRODUCTS



"There are a lot of good products out there and Summit is certainly one of the best. What makes the difference is the fact that they make it easy to do business with them. They are very responsive on both the sales and the product support end of the business. They help us when we're down, respond quickly and get us back up and running so we can do the same thing for our customers. That's what's important and Summit has done a good job delivering."

**STEVE DELLER**  
PRODUCT SUPPORT MANAGER,  
WEST SIDE TRACTOR SALES





### Manufacturing Facility

990 Vernon Rd  
Wathena, KS 66090  
Phone: 785-989-3100  
Toll Free: (866)-985-3100



### Canadian Facility

7575 Edgar Industrial Dr  
Red Deer, AB T4P 3R2  
Phone: (403)347-1400  
Toll-Free: (855)347-1400

# REACH FOR THE PEAK

[SUMMITBODIES.COM](http://SUMMITBODIES.COM)

