



Summit's truck mounted service cranes are designed to meet the demands of today's heavy equipment service industry. Whether deep in a mine or out on a construction site, our heavy duty cranes have a proven track record for dependability. Through strength, reliability and safety, Summit Cranes get the job done.

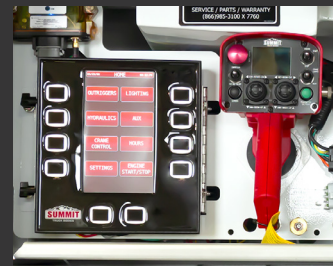
6620 CRANE SPECIFICATIONS

Max. Lifting Capacity	6,000 lb. (2700 kg)
Crane Rating	38,000 ft-lb. (51.5 kN-m)
Horizontal Lifting Radius (ret)	10' 9" (3.35 m) from CL of Crane
Boom Extension	1st Stage Hydraulic 60" (152.4 cm) 2nd Stage Hydraulic 60" (152.4 cm)
Max. Horizontal Reach (ext)	20' 9" (6.32 m) from CL of Crane
Boom Elevation	-5° to 75°
Stowed Height (Crane only)	40" (101.6 cm)
Rotation (worm gear)	400° Power
WINCH SPECIFICATIONS	
Rope Diameter	3/8" (0.95 cm)
Max. Winch Line Pull Speed	60 ft/min (18.2 m/min)
Max. Single Part Line	3,000 lb. (1361 kg)
Max. Double Part Line	6,000 lb. (2720 kg)
Lifting Capacities	6,000 lb. @ 6' (2700 kg @ 1.83 m) 4,200 lb. @ 9' (1900 kg @ 2.75 m) 3,150 lb. @ 12' (1231 kg @ 4.3 m) 2,500 lb. @ 15' (1100 kg @ 4.7 m) 2,100 lb. @ 18' (950 kg @ 5.5 m) 1,900 lb. @ 20' (850 kg @ 6.1 m)
Mounting Space Req'd	21" x 25" (53.3 cm x 63.5 cm)
Approx. Weight	1,750 lb. (794 kg)
Controls	Wireless Control System Standard
Power Supply Req'd	PTO & Pump 8 gpm (30.2 lpm) @ 2800 psi All-in-one power unit

ADVANCED SAFETY ELECTRONICS

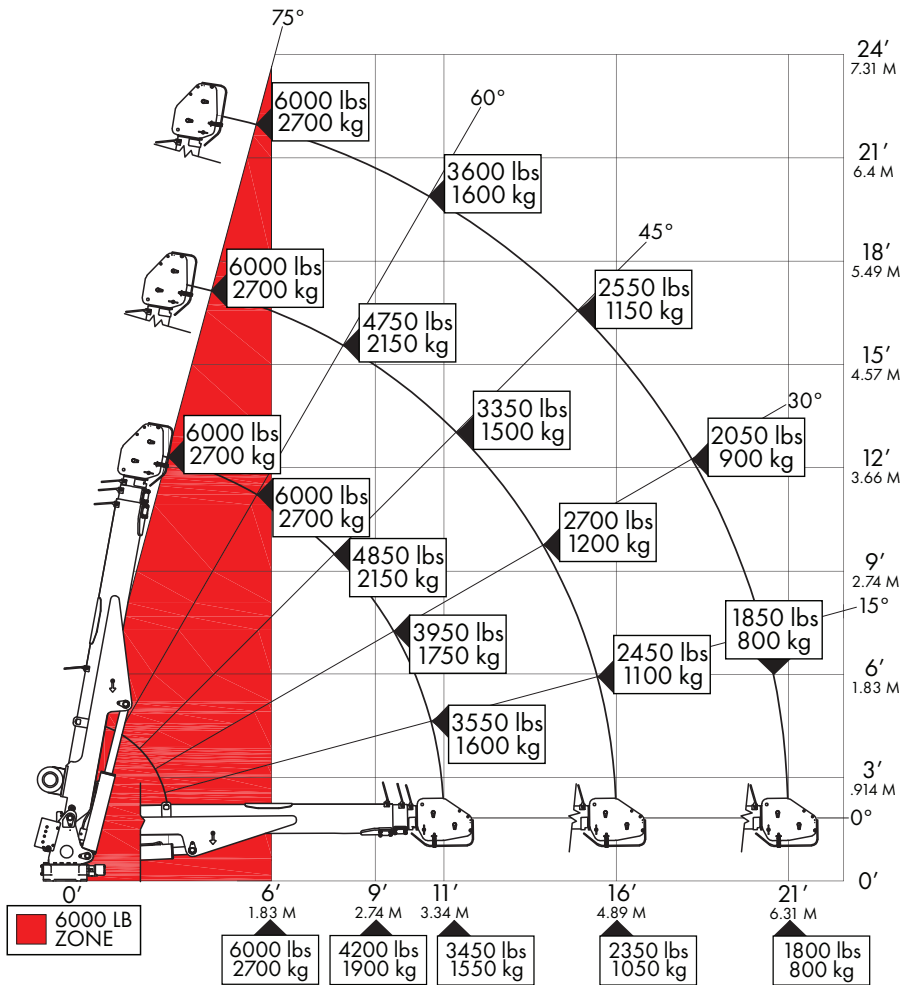
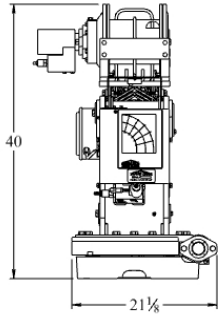
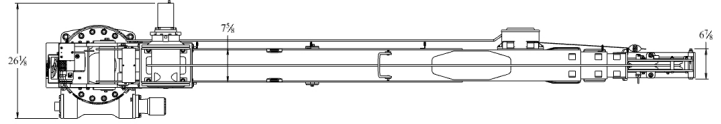
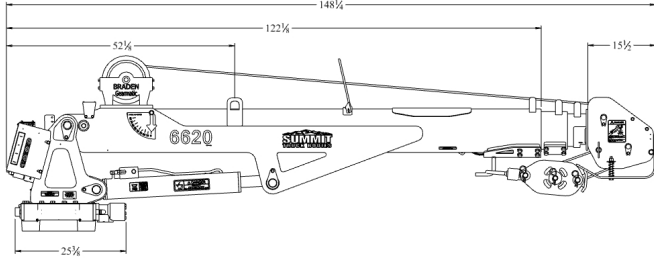


- Increase OSHA Dart Rate and ROI
- Operate and monitor the crane, outriggers, engine, PTO, air compressor, hydraulics, and lights
- Three control points: main control in rear compartment, cab control panel, and wireless remote control
- Prevents crane functionality under unsafe operating conditions
- Digital displays of real-time load moment indicator (LMI) data on the main panel and remote control
- Displays alert in plain text, e.g., oil temp, outriggers not deployed, crane overload, pendant not stowed, etc.
- Self-diagnostic checks upon start-up and during operation
- Systems control made in America with military-grade switches & solid-state componentry. Dust-tight and waterproof
- Incorporate telematics data into your fleet management solution
- ASE is standard on all hydraulic crane service trucks



SCAN TO LEARN MORE ABOUT ASE





- ### HYDRAULIC CRANE FEATURES
- Boom mounted winch
 - 400° Rotation
 - Overload Protection
 - Auto release hook stow
 - PPG powder coated boom
 - ANSI B30.5 and OSHA 1910.180
 - ASE Phase 4 control system standard
 - Phase 1 control system standard for ship-out cranes.

WEIGHT OF LOAD HANDLING DEVICES ARE PART OF THE LOAD LIFTED AND MUST BE DEDUCTED FROM THE CAPACITY. MAXIMUM 1- PART LINE CAPACITY IS 3000lbs (1361kg), FOR GREATER LOADS, USE 2- PART LINE.

