

Summit's 829 Hydraulic Crane represents the next evolution in power, precision, and safety. Built for reliability in demanding environments, the 829 features a lighter, slimmer boom profile that is 30 percent lighter and 37.5 percent stronger than previous Summit designs. Engineered for efficient field operation, it delivers continuous rotation, smooth fully proportional valve control, and Summit's next-generation ASE Phase 5 Control System for smarter, safer performance in the field.

#### 829 CRANE SPECIFICATIONS

<b>Max. Lifting Capacity</b>	8,000 lb. (3629 kg)
<b>Crane Rating</b>	48,000 ft-lb. (65.7 kN-m)
<b>Horizontal Lifting Radius (ret)</b>	12' 6" (3.81 m) from CL of Crane
<b>Boom Extension</b>	1st Stage Hydraulic 94.13" (239 cm) 2nd Stage Hydraulic 96.75" (246 cm)
<b>Max. Horizontal Reach (ext)</b>	29' (8.83 m) from CL of Crane
<b>Boom Elevation</b>	-10° to +77.5°
<b>Stowed Height (crane only)</b>	37" (94 cm)
<b>WINCH SPECIFICATIONS:</b>	
<b>Rope Diameter</b>	25/64" (10 mm)
<b>Max. Winch Line Pull Speed</b>	60 ft/min (18.2 m/min)
<b>Max. Single Part Line</b>	5,000 lb. (2268 kg)
<b>Max. Double Part Line</b>	8,000 lb. (3629 kg)
<b>Rotation</b>	Continuous Power
<b>Lifting Capacities</b>	8,000 lb. @ 6' (3628.7 kg @ 1.83 m) 5,333 lb. @ 9' (2419 kg @ 2.74 m) 4,000 lb. @ 12' (1418 kg @ 3.65 m) 3,000 lb. @ 15' (1360.7 kg @ 4.57 m) 2,666 lb. @ 18' (1209 kg @ 5.49 m) 2,285 lb. @ 21' (1036.4 kg @ 6.40 m) 2,000 lb. @ 24' (907 kg @ 7.7 m) 1,777 lb. @ 27' (806 kg @ 8.22 m) 1,655 lb. @ 29' (750.6 kg @ 8.84 m)
<b>Mounting Space Req'd</b>	23.6" x 18.6" (60 cm x 47 cm)
<b>Approx. Weight</b>	1920 lb. (871 kg)
<b>Controls</b>	Wireless Control System Standard
<b>Power Supply Req'd</b>	PTO & Pump 8 gpm (30.2 lpm) @ 2800 psi All-in-one power unit

#### ADVANCED SAFETY ELECTRONICS



- Increase OSHA DART rate performance and ROI
- Redesigned main control panel with intuitive touchscreen layout
- Dimmable display automatically adjusts to lighting conditions
- Access operation manuals and resources directly from the display
- Real-time diagnostics for all monitored systems
- Dedicated maintenance menu for tracking service intervals
- Predictive maintenance scheduling and event logging
- Operate and monitor engine, PTO, outriggers, lights, and crane functions
- New crane remote with full-color display
- Wireless remote operation with auto-deploy, auto-retract, and auto-stow
- Customizable hot keys for frequently used tasks
- Integrated vehicle alarm for added security
- Supports integration with fleet management systems

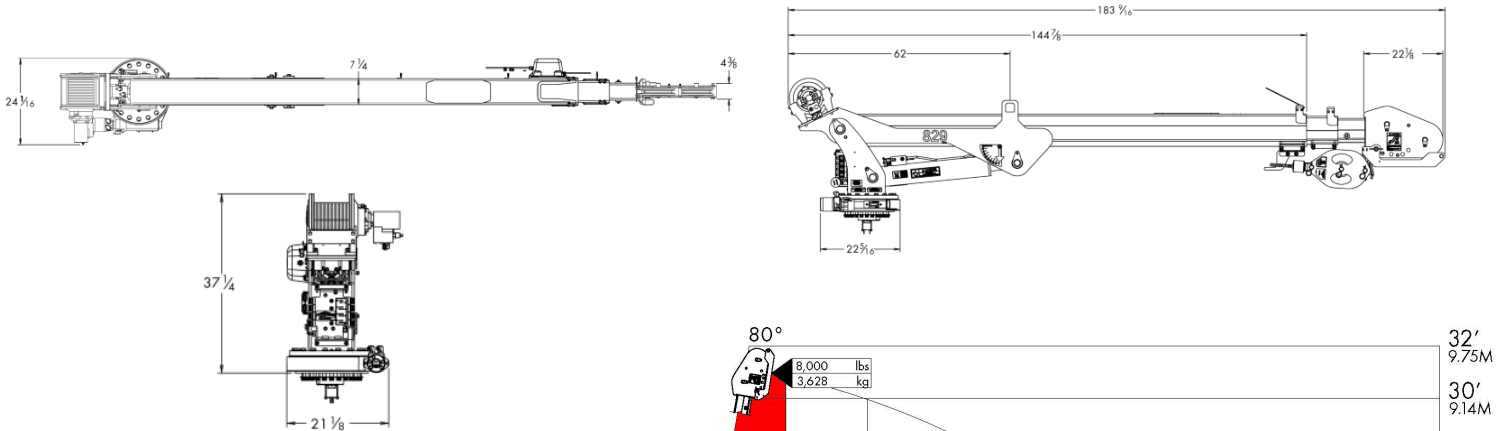


SCAN TO LEARN MORE ABOUT ASE





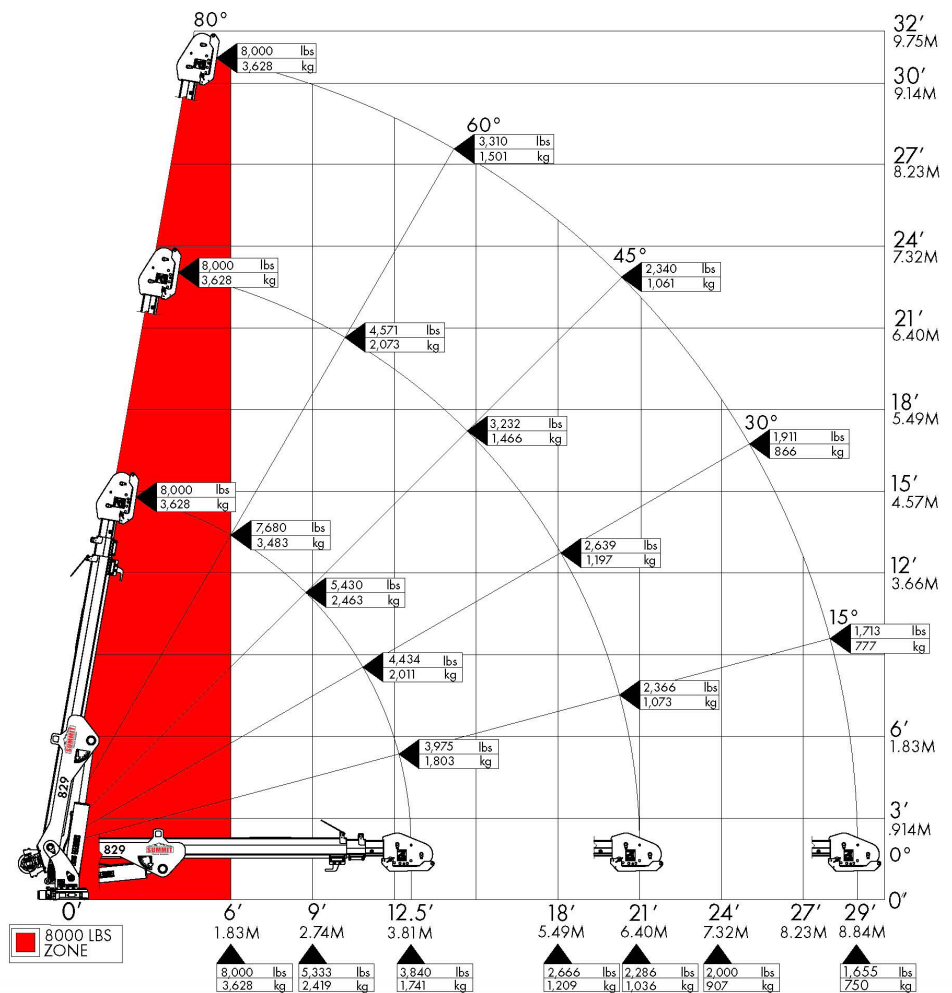
## STRENGTH AND PRECISION, ENGINEERED FOR PERFORMANCE



The 829 Hydraulic Crane delivers high lifting capacity with lower weight and advanced operator control, giving technicians a compact, powerful solution for demanding field applications. Its strengthened boom structure and continuous rotation design support efficient, precise work across the full lifting range.

### CRANE FEATURES

- Slim, lower-profile design for improved clearance
- 30% lighter and 37.5% stronger than previous Summit designs
- Continuous rotation with sealed slip ring
- True fully proportional control valve for smooth, precise movement
- Maintenance free modular anti-two block system
- ANSI B30.5 and OSHA 1910.180 compliant
- ASE Phase 5 controls
- ASE Phase 1 available for crane-only purchases



WEIGHT OF LOAD HANDLING DEVICES ARE PART OF THE LOAD LIFTED AND MUST BE DEDUCTED FROM THE CAPACITY.

