

Summit's 1229 Hydraulic Crane represents the next evolution in crane design, delivering proven 12,000 lb lifting capacity with Summit's latest structural, hydraulic, and control advancements.

Built for reliability in demanding field environments, the 1229 features a redesigned boom profile, a fully enclosed rotate system that reduces overall crane weight while maintaining strength, and smooth, fully proportional control. Engineered for efficient operation, it delivers continuous rotation and integrates seamlessly with Summit's ASE Phase 5 Control System for smarter, safer performance in the field.

1229 CRANE SPECIFICATIONS

Max. Lifting Capacity	12,000 lb. (5400 kg)
Crane Rating	70,000 ft-lb. (94.9 kN-m)
Horizontal Lifting Radius (ret)	12' 5" (3.78m) from CL of Crane
Boom Extension	1st Stage Hydraulic 96.75" (245 cm) 2nd Stage Hydraulic 94.125" (239 cm)
Max. Horizontal Reach (ext)	29' 3" (8.93 m) from CL of Crane
Boom Elevation	-10° to +77.5°
Stowed Height (crane only)	40" (97.9 cm)
WINCH SPECIFICATIONS:	
Rope Diameter	7/16" (1.1 cm)
Max. Winch Line Pull Speed	60 ft/min (18.2 m/min)
Max. Single Part Line	6,000 lb. (2722 kg)
Max. Double Part Line	12,000 lb. (5400 kg)
Rotation	Continuous Power
Lifting Capacities	12,000 lb. @ 5.8' (5443kg @ 1.7 m) 7,700 lb. @ 9' (3,493 kg @ 2.7 m) 5,645 lb. @ 12.4' (2,560 kg @ 3.7 m) 3,888 lb. @ 18' (1,763 kg @ 5.49 m) 3,333 lb. @ 21' (1,512 kg @ 6.40 m) 2,916 lb. @ 24' (1,323 kg @ 7.32 m) 2,400 lb. @ 27' (1,089 kg @ 8.23 m) 2,393 lb. @ 29.25' (1,08 kg @ 8.9 m)
Mounting Space Req'd	23.6" x 18.6" (60 cm x 47 cm)
Approx. Weight	2435 lb. (1104.5 kg)
Controls	Wireless Control System Standard
Power Supply Req'd	PTO & Pump 8 gpm (30.2 lpm) @ 2800 psi All-in-one power unit

ADVANCED SAFETY ELECTRONICS



- Increase OSHA DART rate performance and ROI
- Redesigned main control panel with intuitive touchscreen layout
- Dimmable display automatically adjusts to lighting conditions
- Access operation manuals and resources directly from the display
- Real-time diagnostics for all monitored systems
- Dedicated maintenance menu for tracking service intervals
- Predictive maintenance scheduling and event logging
- Operate and monitor engine, PTO, outriggers, lights, and crane functions
- New crane remote with full-color display
- Wireless remote operation with auto-deploy, auto-retract, and auto-stow
- Customizable hot keys for frequently used tasks
- Integrated vehicle alarm for added security
- Supports integration with fleet management systems

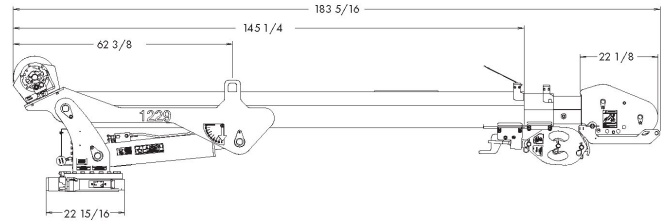
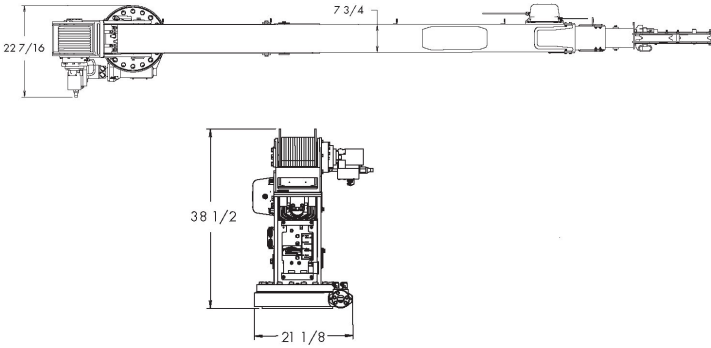


SCAN TO LEARN MORE ABOUT ASE





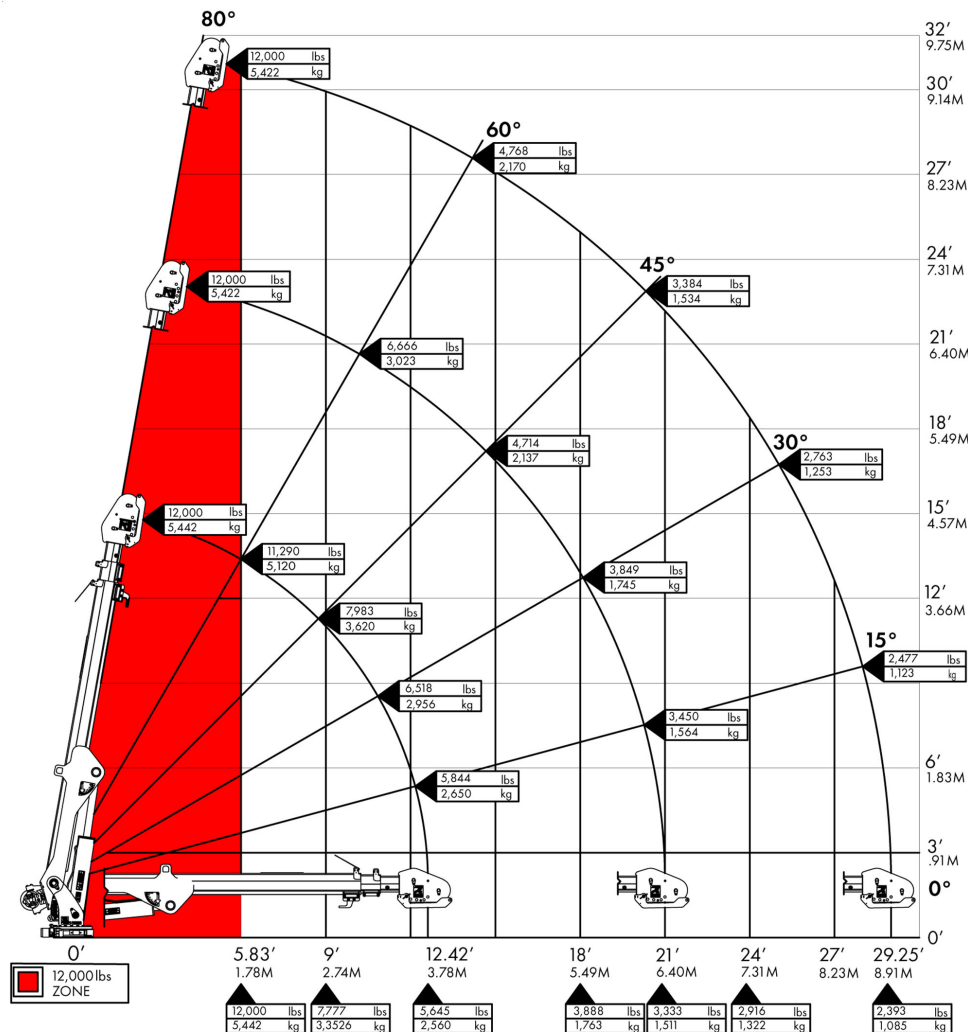
STRENGTH AND PRECISION, ENGINEERED FOR PERFORMANCE



The 1229 Hydraulic Crane delivers high lifting capacity with reduced weight and advanced operator control, providing technicians with a compact, powerful solution for demanding field applications. Its strengthened boom structure, fully proportional hydraulic controls, and continuous rotation system support efficient, precise work across the full lifting range.

CRANE FEATURES

- Slim, lower-profile boom and horse head for improved clearance
- Winch repositioned behind boom pivot for lower crane height
- Redesigned boom profile expands elevation range from -10° to $+77.5^{\circ}$
- Redesigned modular anti-two-block system for improved protection and serviceability
- Continuous rotation with a fully enclosed worm gear and sealed slip ring
- Fully proportional hydraulic valve for smooth, responsive multi-function control
- ANSI B30.5 and OSHA 1910.180 compliant
- ASE Phase 5 control system
- ASE Phase 1 available for crane-only purchases



WEIGHT OF LOAD HANDLING DEVICES ARE PART OF THE LOAD LIFTED AND MUST BE DEDUCTED FROM THE CAPACITY.

